

BALDOR® • RELIANCE 

Product Information Packet

EM3155T-G

2HP,3450RPM,3PH,60HZ,143T,3524M,OPSB,F1

| Part Detail | | | | | | | |
|-------------|--------|-------------|------------|-------------|--------|---------------|------------|
| Revision: | Q | Status: | PRD/A | Change #: | | Proprietary: | No |
| Type: | AC | Elec. Spec: | 35WGQ054 | CD Diagram: | CD0005 | Mfg Plant: | |
| Mech. Spec: | 35Z948 | Layout: | 35LYZ948 | Poles: | 02 | Created Date: | 11-17-2011 |
| Base: | RG | Eff. Date: | 01-28-2019 | Leads: | 9#18 | | |

| Specs | | | |
|---------------------------------|-------------------------|--------------------------------|-----------------|
| Catalog Number: | EM3155T-G | Insulation Class: | H |
| Enclosure: | OPSB | Inverter Code: | Inverter Ready |
| Frame: | 143T | KVA Code: | K |
| Frame Material: | Steel | Lifting Lugs: | No Lifting Lugs |
| Output @ Frequency: | 2.000 HP @ 60 HZ | Locked Bearing Indicator: | Locked Bearing |
| Synchronous Speed @ Frequency: | 3600 RPM @ 60 HZ | Motor Lead Quantity/Wire Size: | 9 @ 18 AWG |
| Voltage @ Frequency: | 460.0 V @ 60 HZ | Motor Lead Exit: | Ko Box |
| | 230.0 V @ 60 HZ | Motor Lead Termination: | Flying Leads |
| XP Class and Group: | None | Motor Type: | 3524M |
| XP Division: | Not Applicable | Mounting Arrangement: | F1 |
| Agency Approvals: | UR | Power Factor: | 87 |
| | CSA EEV | Product Family: | General Purpose |
| | CSA | Pulley End Bearing Type: | Ball |
| Auxillary Box: | No Auxillary Box | Pulley Face Code: | Standard |
| Auxillary Box Lead Termination: | None | Pulley Shaft Indicator: | Standard |
| Base Indicator: | Rigid | Rodent Screen: | None |
| Bearing Grease Type: | Polyrex EM (-20F +300F) | RoHS Status: | ROHS COMPLIANT |
| Blower: | None | Shaft Extension Location: | Pulley End |

| | | | |
|---------------------------------------|---------------------------|------------------------------------|---------------------|
| Current @ Voltage: | 2.500 A @ 460.0 V | Shaft Ground Indicator: | Shaft Grounding |
| | 5.000 A @ 230.0 V | Shaft Rotation: | Reversible |
| | 5.600 A @ 208.0 V | Shaft Slinger Indicator: | No Slinger |
| Design Code: | B | Speed Code: | Single Speed |
| Drip Cover: | No Drip Cover | Motor Standards: | NEMA |
| Duty Rating: | CONT | Starting Method: | Direct on line |
| Electrically Isolated Bearing: | Not Electrically Isolated | Thermal Device - Bearing: | None |
| Feedback Device: | NO FEEDBACK | Thermal Device - Winding: | None |
| Front Face Code: | Standard | Vibration Sensor Indicator: | No Vibration Sensor |
| Front Shaft Indicator: | None | Winding Thermal 1: | None |
| Heater Indicator: | No Heater | Winding Thermal 2: | None |

| | | | | | | | | | | |
|----------------------------------|------------------------|--|-------------|----|-----------------------|------|--|--------------|--------------|-----|
| Nameplate NP3553LUA | | | | | | | | | | |
| CAT.NO. | EM3155T-G | | | | | | | | | |
| SPEC. | 35Z948Q054G1 | | | | | | | | | |
| HP | 2 | | | | | | | | | |
| VOLTS | 230/460 | | | | | | | | | |
| AMPS | 5/2.5 | | | | | | | | | |
| RPM | 3450 | | | | | | | | | |
| FRAME | 143T | | | | HZ | 60 | | | PH | 3 |
| SF | 1.15 | | CODE | K | DES | B | | CLASS | H | |
| NEMA NOM. EFF | 85.5 | | PF | 87 | | | | | | |
| RATING | 40C AMB-CONT | | | | | | | | | |
| CC | 010A | | | | USABLE AT 208V | | | | | 5.6 |
| DE | 6205 | | | | ODE | 6203 | | | | |
| ENCL | OPSB | | SN | | | | | | | |
| VPWM INVERTER READY | | | | | | | | | | |
| CT30-60(2:1) VT3-60(20:1) | | | | | | | | | | |
| USABLE AT | 50HZ 2HP 190/380V 6/3A | | | | | | | | SF1.0 | |

| Parts List | | |
|-------------|--|----------|
| Part Number | Description | Quantity |
| SA234532 | SA 35Z948Q054G1 | 1.000 EA |
| RA221504 | RA 35Z948Q054G1 | 1.000 EA |
| NS2512A01 | INSULATOR, CONDUIT BOX X | 1.000 EA |
| 35CB3009 | 35 CB W/1.09 DIA. LEAD HOLE @ 6: | 1.000 EA |
| 51XB1016A07 | 10-16 X 7/16 HXWSSLD SERTYB | 2.000 EA |
| 11XW1032G06 | 10-32 X .38, TAPTITE II, HEX WSHR SLTD U | 1.000 EA |
| 35EP3209G00 | MASTER ODE,203 BRG | 1.000 EA |
| HW5100A03 | WAVY WASHER (W1543-017) | 1.000 EA |
| 35EP3210C00 | MASTER DE,205 BRG,1.000SH,LCK BRG | 1.000 EA |
| 51XN1032A18 | 10-32 X 1 1/8 HX WS SL SR (ESKAY) | 2.000 EA |
| XY1032A02 | 10-32 HEX NUT DIRECTIONAL SERRATION | 4.000 EA |
| 35CB4521 | 35 LIPPED CB LID (GALV & PHOSPH) | 1.000 EA |
| 51XW0832A07 | 8-32 X .44, TAPTITE II, HEX WSHR SLTD SE | 4.000 EA |
| HW2501D13 | KEY, 3/16 SQ X 1.375 | 1.000 EA |
| HA7000A01 | KEY RETAINER 7/8" DIA SHAFT | 1.000 EA |
| 85XU0407S04 | 4X1/4 U DRIVE PIN STAINLESS | 2.000 EA |
| LB1459 | AEGIS SGR LABEL "AEGISLBL-100" | 1.000 EA |
| MJ1000A02 | GREASE, MOBIL POLYREX EM - 124047 | 0.050 LB |
| HA3100A45 | THRUBOLT 10-32 X 8.875 | 4.000 EA |
| 35AD2005A01 | BAFFLE PLATE,MOD 35-SLTD BAND MTRS TDR | 1.000 EA |
| MG1000Y03 | MUNSELL 2.53Y 6.70/ 4.60, GLOSS 20, | 0.017 GA |
| LC0005E01 | CONN.DIA./WARNING LABEL (LC0005/LB1119N) | 1.000 EA |
| MN416A01 | TAG-INSTAL-MAINT no wire (1200/bx) 3/19 | 1.000 EA |
| NP3553LUA | ALUM SUPER-E VPWM INVERTER READY UL | 1.000 EA |

| Parts List (continued) | | |
|-------------------------------|--------------------------|-----------------|
| Part Number | Description | Quantity |
| 35PA1066 | PKG GRP, PRINT PK1008A06 | 1.000 EA |
| LB1350 | BAR CODE LABEL FOR YORK | 1.000 EA |
| FE-0000001 | ZRTG FE ASSEMBLY | 1.000 EA |
| PE-0000001 | ZRTG PE ASSEMBLY | 1.000 EA |

AC Induction Motor Performance Data

Record # 53133

Typical performance - not guaranteed values

| Winding: 35WGQ054-R009 | | Type: 3524M | | Enclosure: OPSB | |
|-------------------------------|--------------|----------------------------------|--|------------------------|--|
| Nameplate Data | | | 460 V, 60 Hz: High Voltage Connection | | |
| Rated Output (HP) | 2 | Full Load Torque | 3 LB-FT | | |
| Volts | 230/460 | Start Configuration | direct on line | | |
| Full Load Amps | 5/2.5 | Breakdown Torque | 11 LB-FT | | |
| R.P.M. | 3450 | Pull-up Torque | 8 LB-FT | | |
| Hz | 60 Phase | Locked-rotor Torque | 9.6 LB-FT | | |
| NEMA Design Code | B | Starting Current | 21.5 A | | |
| Service Factor (S.F.) | 1.15 | No-load Current | 1 A | | |
| NEMA Nom. Eff. | 85.5 | Line-line Res. @ 25°C | 7.37 Ω | | |
| Rating - Duty | 40C AMB-CONT | Temp. Rise @ Rated Load | 31°C | | |
| S.F. Amps | | Temp. Rise @ S.F. Load | 37°C | | |
| | | Locked-rotor Power Factor | 53.6 | | |
| | | Rotor inertia | 0.0657 LB-FT ² | | |

Load Characteristics 460 V, 60 Hz, 2 HP

| % of Rated Load | 25 | 50 | 75 | 100 | 125 | 150 | S.F. |
|------------------------|-----------|-----------|-----------|------------|------------|------------|-------------|
| Power Factor | 51 | 70 | 81 | 86 | 87 | 88 | 87 |
| Efficiency | 78.3 | 85.2 | 86.9 | 86.5 | 85.6 | 84.2 | 86 |
| Speed | 3570 | 3541 | 3510 | 3476 | 3441 | 3403 | 3455 |
| Line amperes | 1.2 | 1.6 | 2 | 2.5 | 3.1 | 3.7 | 2.86 |

Performance Graph at 460V, 60Hz, 2.0HP Typical performance - Not guaranteed values

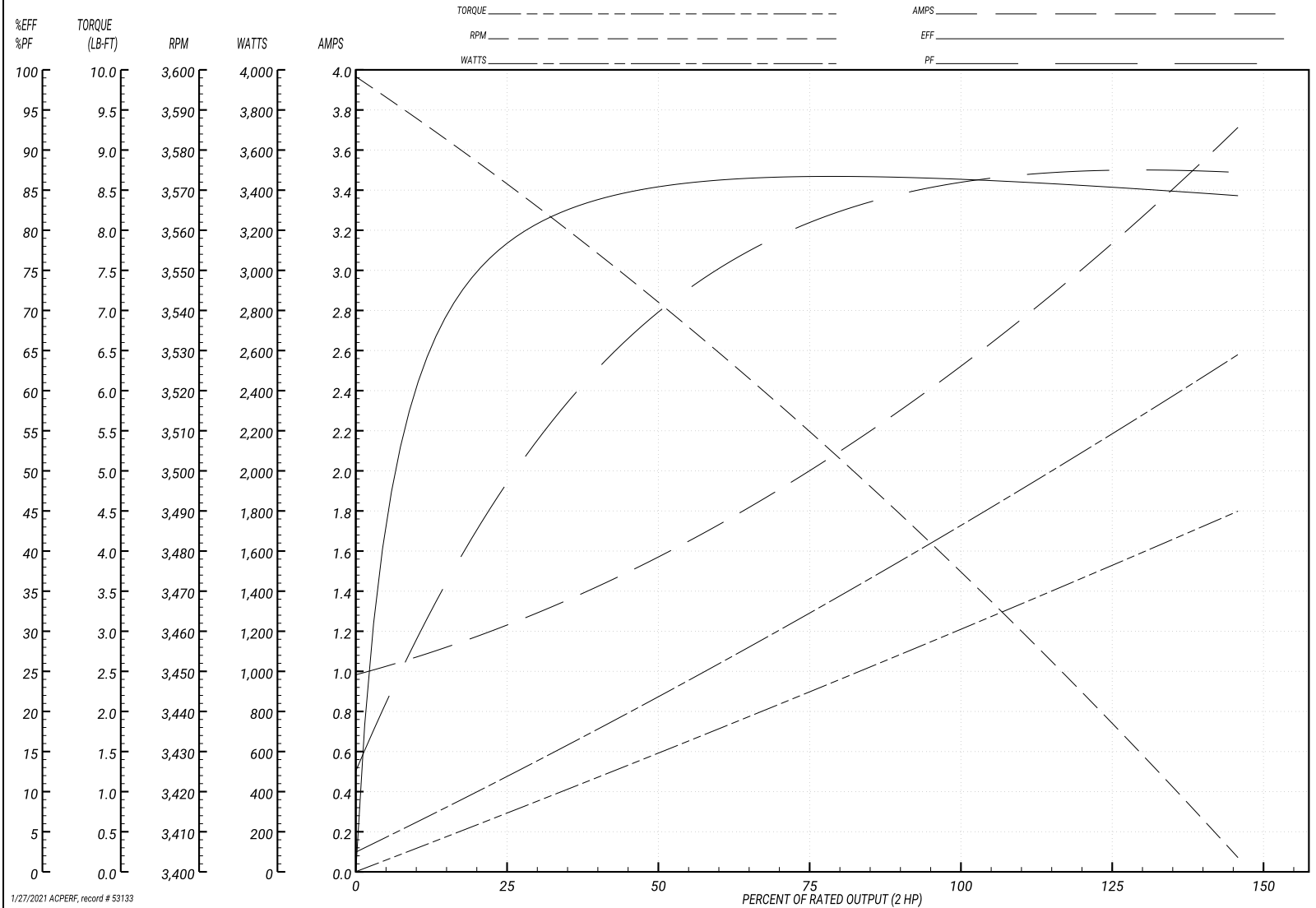
ABB Motors and Mechanical Inc.

WINDING # 35WGQ054

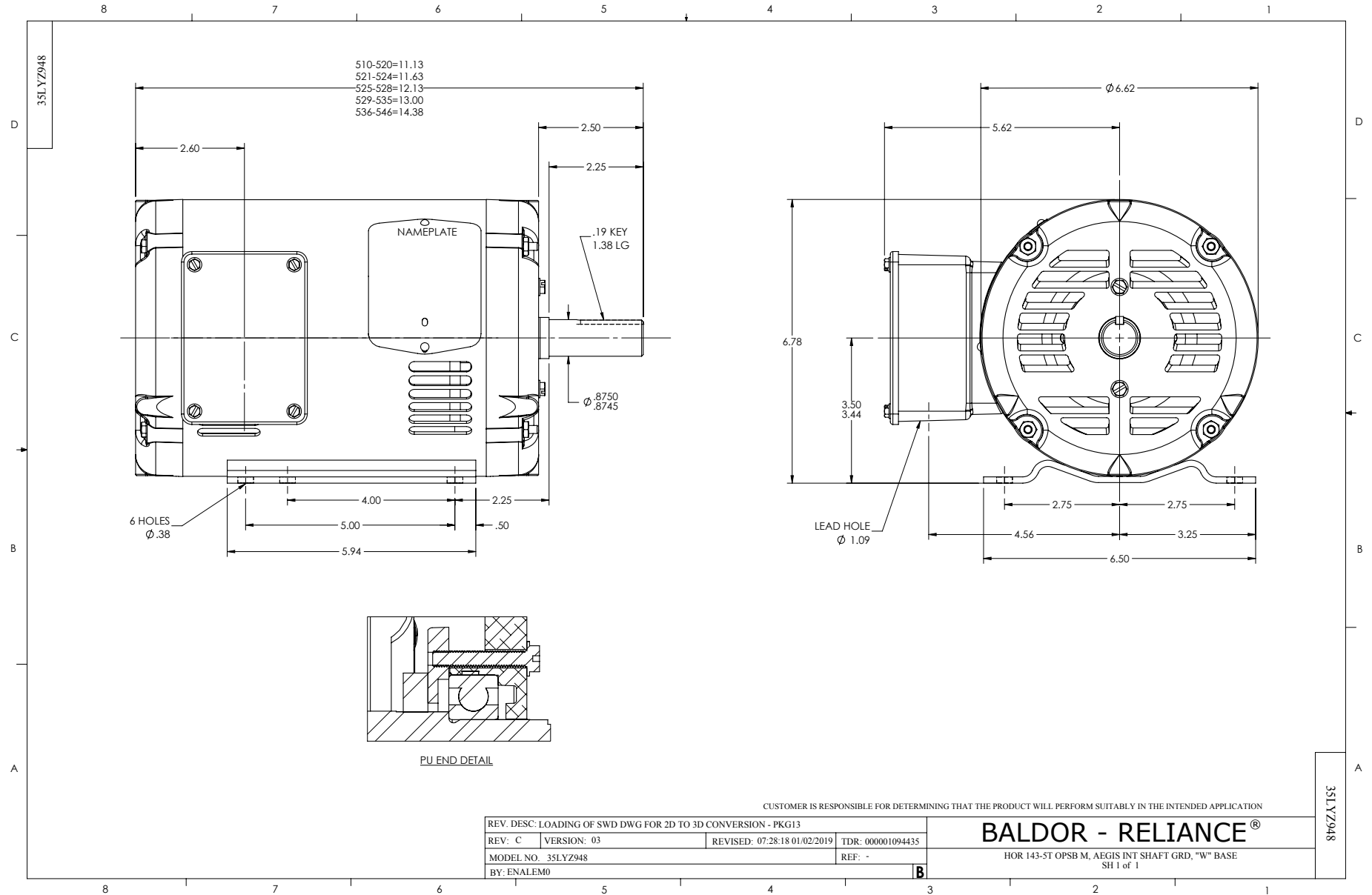
Typical performance - not guaranteed values.

2 HP 3 PH 60 HZ 3450 RPM 460 V 3524M

TORQUES(LB-FT): PO=11 PU=8 LR=9.6 LRA=21.5



1/27/2021 ACPERF, record # 53133



CD0005



LOW VOLTAGE
(2Y)



LINE

HIGH VOLTAGE
(1Y)



LINE

NOTES:

1. INTERCHANGE ANY TWO LINE LEADS TO REVERSE ROTATION.
2. OPTIONAL THERMOSTATS ARE PROVIDED WHEN SPECIFIED.
3. ACTUAL NUMBER OF INTERNAL PARALLEL CIRCUITS MAY BE A MULTIPLE OF THOSE SHOWN ABOVE.
4. LEAD COLORS ARE OPTIONAL. LEADS MUST ALWAYS BE NUMBERED AS SHOWN.

REV. DESC: REVISE TO SHOW OPTIONAL COLORS

REV. LTR: E BY: JLP

REVISED: 01/19/99 10:15

TDR: 0171435

90000

FILE: AAA00005140

MDL: -

MTL: -

BALDOR ELECTRIC Co.

3PH, DV, 9 LEADS

CD0005